



IOWA SALES TEAM:

Marc Steele
641.512.3854
(Northern Iowa)

Brian Glenney
641.751.4365
(Central Iowa)

Danny Thede
641.750.6428
(Southern Iowa)

DIRECT LINES:

Sales:

800.866.3105

Parts:

800.866.3104

Service:

866.286.1320

Training:

763.295.5119

Tech Line:

763.271.2982

NEW BUS INVENTORY

PASS	YEAR	SPEC	MAKE	ENGINE	BRK
14	2015	1547	Starcraft	Chev	H
14	2017	1723	Collins	Chev	H
14	2017	1753	Ford/Transit	3.7G	H
14	2017	1743	Transit	Ford	H
22	2017	1745	Collins	Ford	H
44+	2016	1607	IC - CE	ISB/240	A
44+	2017	1705	IC - CE	ISB/240	A
65	2016	1602	IC - CE	ISB/240	A
65	2016	1602	IC - CE	ISB/240	A
65	2016	1603	IC - CE	ISB/240	A
65	2017	1703	IC - CE	ISB/240	A
65	2017	1706	IC - CE	ISB/240	A
65	2016	1642	IC - CE	ISB/250	A
65	2016	1611	IC - CE	MXDT/230	A
77/71	2017	1746	IC - CE	ISB/240	A
77	2017	1701	IC - CE	ISB/240	A
77	2017	1702	IC - CE	ISB/240	A
77	2017	1732	IC - CE	ISB/240	A
77	2017	1733	IC - CE	ISB/240	A
77	2017	1707	IC - CE	ISB/240	A
77	2017	1708	IC - CE	ISB/250	A
77	2016	1605	IC - CE	MXDT/230	A
77	2017	1729	IC - CE	Propane/270	A
84	2017	1740	IC - RE	MXDT/285	A
84	2017	1734	IC - RE	MXDT/285	A

***Partial inventory listed* - See our website for full list - www.hoglundbus.com**

USED BUS INVENTORY

PASS	YEAR	FILE	MAKE	ENGINE	BRK	ODO
Large Conventional Buses 65 to 77 Passenger						
65	2013	22005ai	IC	MX7/220	A	40,483 miles
65	2012	21472ai	IC	MX7/240	A	52,308 miles
65	2010	23837ai	IC	MX7/215	A	73,225 miles
65	2008	23836ai	IC	MX7/215	A	77,687 miles
65	2008	24834ai	BB	ISB 6.7l	A	102,193 miles
66	2004	24933A	Intl	444E	H	95,263 miles
66	2004	24932A	Intl	444E	H	94,516 miles

Transit Buses

84	2007	24833ai	BB	C7/300HP	A	92,043 miles
----	------	---------	----	----------	---	--------------

Smaller Buses 10 to 64 Passenger

59	2008	23414ai	TH	Mercedes	H	58,872 miles
----	------	---------	----	----------	---	--------------

Special Needs Lift Buses

33+	2005	24073ai	IC	DT466	A	112,209 miles
-----	------	---------	----	-------	---	---------------

***Partial inventory listed* - See our website for full list - www.hoglundbus.com**



SERVICE ARTICLE

How to Program Parameters After Changing a WABCO FPB ECU (Park Brake Shows NA)

APPLIES TO: All HPV with WABCO Full Power Brakes

After changing a WABCO Full Power Brakes ECU it is necessary to program the parameters into the new ECU for that VIN.

Note: You must have WABCO Toolbox version 8.7 or later. If you do not have the latest version use the update report tool to scan your computer and download the software as needed.

STEPS

1. Change ECU.
2. Get onto ISIS with the EZTech that you're going to use to program with.
3. From the ISIS home page, move your mouse over Diagnostic along the top of the screen.
4. Click on Wabco FPB Programming.
5. Enter your Chassis number and click submit.
6. Click on Download File.

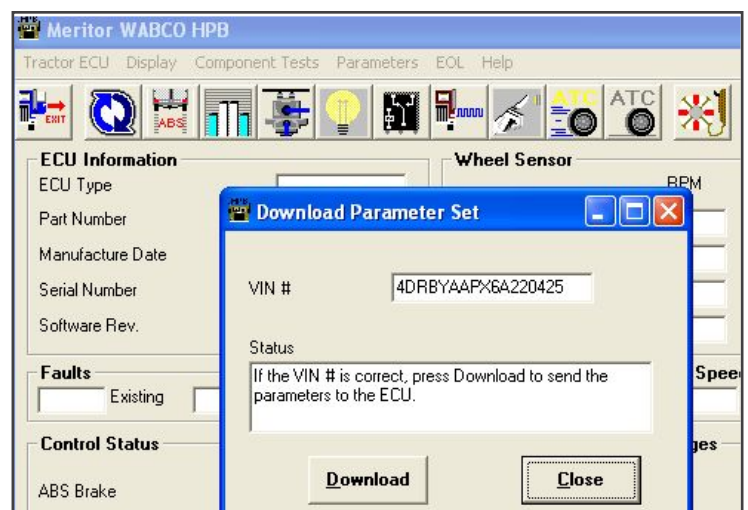
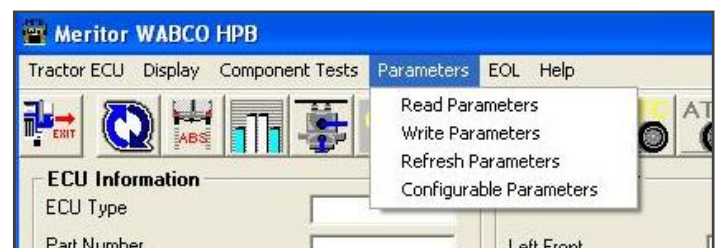
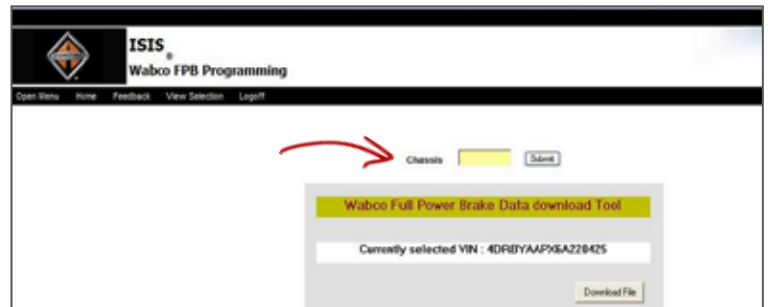
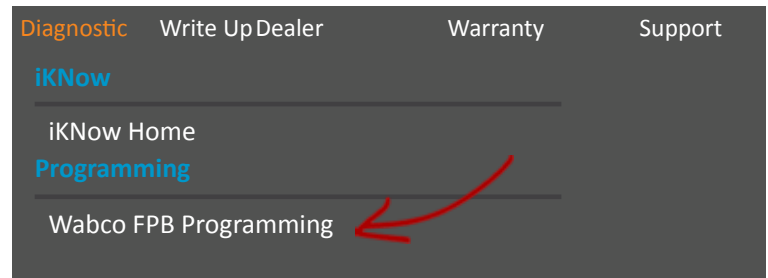
If you get an error message like this:



- Click on the link: Wabco_Fix (link is available to click through when you log in with your CYY#)
- Download the program to your desktop and run it. You do not need admin rights to do this. Now, the problem should be resolved.
- Please re-try the step 6.

7. Hook the EZTech up to the vehicle, turn the key on and open the WABCO diagnostic software under HABS.
8. Click on Parameters in the tool bar along the top of the screen.
9. Click on Write Parameters. You will see your VIN number in the box.
10. Click on the Download button.
11. After programming it is necessary to cycle the key to complete the process.

To view the complete article with click through links, log into Navistar's site with your CYY# and search iKNow article IK0400028.



Marshalltown • 641.753.7669

Monday - Friday • 8am - 5pm

To sign up for **WEEKLY PARTS SPECIALS**, e-mail marketing@hoglundbus.com

We carry a full line of light duty products at competitive prices, and can supply everything needed to keep your vehicle running smoothly all of the time. Our goal is to make ordering parts as easy as possible!

BRAKE ITEMS		
ITEM	PRICE	PART #:
OLD YELLOW AND NEW-YELLOW ACRYLIC ENAMEL W/HARDENER IN A SPRAY CAN	\$15.95 ea.	
DOT 4 BRAKE FLUID UPGRADE FOR HI POWER BRAKE VEHICLES	\$5.58 QT.	ZDEM4532
786 BRAKE PADS THAT RUST SAME SPEED AS THE BUS	\$78.56	PFH078612
769 BRAKE PADS THAT RUST SAME SPEED AS THE BUS	\$84.90	PFH076912
786 PADS THAT NEVER RUSTED TO START WITH	\$89.90	HP7655D786
SPRAY STEPWELL LINER	\$9.73	264S
MERITOR 850 REMAN CALIPER	\$87.01	R42R55850
NEW 850 CALIPER NO CORE*	\$91.73	1117

*(NEW- NOT ONE THAT DIDN'T WORK ONCE BEFORE YOU BOUGHT IT)

LABOR SAVERS NOW AND LATER



**FRONT OR REAR IC
REMAN ENTRANCE
DOORS STRONGER
THAN NEW**

\$415.00



**ICE TOOL
SIDE WINDOW
REPAIR TOOL FOR
WINDOWS THAT
ALWAYS COME
DOWN** **\$41.99**

STAINLESS STEEL THOMAS HINGES

- FUEL DOOR HINGE **\$21.55** 5400-0265HOG
- 15 3/8" BATTERY DOOR HINGE **\$33.21** 5400-1735HOG
- 22" BATTERY DOOR HINGE **\$40.62** TBB140603HOG



OVER STOCK SEAT COVERS

- 39" STAPLE ON DOT BB BURGUNDY BACK COVER **\$12.49**
- 39" BB BROWN CUSHION COVER **\$ 7.03**
- 39" THOMAS GRAY CUSHION COVERS **\$ 7.03**

ALL MAKES PROBLEM SOLVERS

ITEM:	PRICE:	PART NUMBER:
FREIGHTLINER HORN CONTACT FIX	\$129.98	RGTSK000325HOG
DROP-IN IC WHEELWELL REPAIR KIT	\$389.12	2241534CK
RUST REPAIR FOR 9" STEPS	\$46.21	STEP-1
RUST REPAIR FOR 2 9" STEPS	\$74.65	STEP-2 & 3
RUST REPAIR SPECIFIC TO BB BUSES	\$43.21	STEP-BB
WASTE BASKET HOLDER	\$11.85	1946



**THOMAS LONG GREASE-ABLE
FUEL LOCK** **\$16.63**
p/n: 1820A22HOG

**THOMAS STANDARD GREASE-ABLE
FUEL LOCK** **\$15.63**
p/n: 6700-0091HOG

**STAINLESS STEEL RED STOP/TAIL
P/N: W1010S112010** **\$15.99**

**STAINLESS STEEL AMBER TURN
P/N: W1010S112020** **\$15.79**

NEED A BUS?

Come See Us!



We understand that a New Bus may not fit your budget — that's why we have a great line of used buses! Call us today to discuss all of your options!



**37005HOG C2 08+ STAINLESS
STEEL HEATER HOSE PLUMBING
MANIFOLD** **\$225.69**

HOGLUND BUS & TRUCK

823 S. 19th Avenue
Marshalltown, IA 50158

Return Service Requested



**Hoglund Bus & Truck —
The Transportation Specialists since 1947**

www.hoglundbusandtruck.com



Hoglund Bus & Truck is growing it's service department in Bloomington, MN. The **Holly Hoglund Klein Service Center** will replace our Roseville, MN and Lakeville, MN locations.

Estimated Opening ~ Fall 2016.

Stay tuned for updated photos as we plan our Grand Opening!



UNIVERSITY - 2016 DATES

2016 IC Bus University training for our customer technicians at the Training Center at the Tulsa Bus Plant on the following dates:

Contact your salesman!

~~June 13 - 16~~ **Sold Out**
June 27 - 30
~~July 11 - 14~~
August 8 - 11

SERVICE SPECIAL

10% OFF - DOT INSPECTIONS
Contact Service to schedule - 763.271.2999

TRADE SHOWS

6/16	ISFIS - Iowa School Finance Information Services, FFA Enrichment Center (on the DMACC Campus)
7/18 - 7/20	IPTA - Iowa Pupil Transportation Association Airport Holiday Inn, Des Moines
8/3 - 8/4	SAI - School Administrators Iowa Community Choice Credit Union Conv. Ctr.

FRONT LINE TECH SUPPORT

We invite you to contact our Tech Helpline with any technical questions you might have. Contact Doug Yager, 763.271.2982, service@hoglundbus.com

WARRANTY SUPPORT

We invite you to contact our Warranty Dept. with any questions you might have. Contact Brian Tesmer at 763.271.2978, warranty@hoglundbus.com